

CMR16 Series Overview

Description

Cosmau cmr16 series multiple passage rotary unions with 16 channel for media transfer, design for compressed air, gas in rotating system.

- Transmit compressed air, gas when 360°unrestricted rotation
- Combined with electrical slip ring,transfer power,control signal, data
- Through hole or flange structure optional
- Very low torque



Specifications

Item	
Pneumatic Channel	16
Pressure	-100kPa ~ 1MPa
Connection Szie	M5, 1/8"
Connection Type	NPT, BSPP
Operating Temperature	-5° C to 80° C
Suitable Media	Air / Gas / Vacuum
Speed	120 RPM (reference)
Material	AL alloy

All values listed under Technical Specifications are dependent on a combination of all application parameters. Please note operational life is dependent upon both rotational speed and duty cycle.

Options

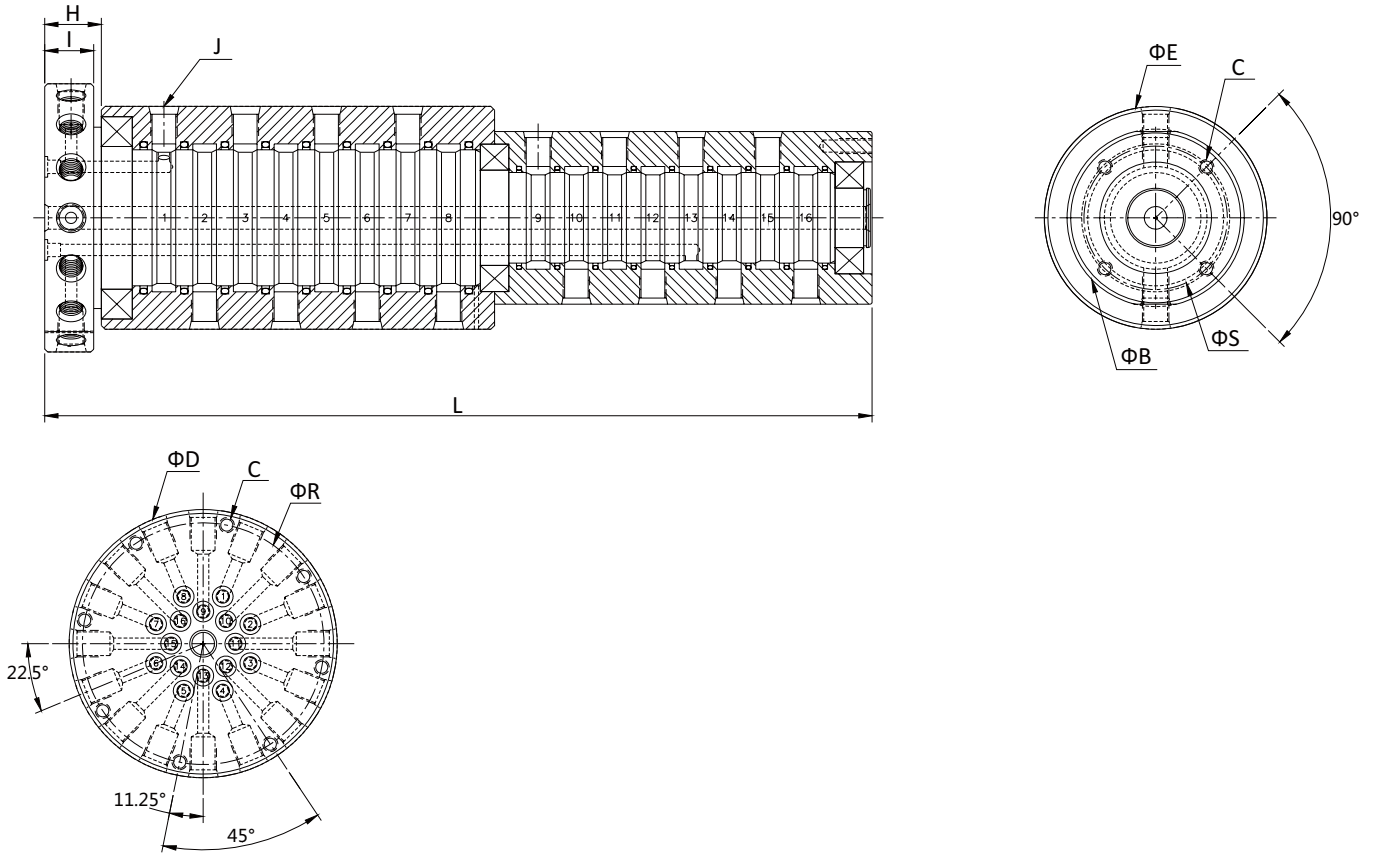
- Mounting Flange
- Connection Size
- Connection Type
- Material
- Pressure
- Media
- Optional Speed
- Combine with electrical slip ring

INTRODUCE

CMR16

13

CMR16 Series Dimensions



Part#	J(BSPP/NPT)	ΦD	ΦE	ΦB	ΦR	ΦS	C	H	I	L
CMR-1600	M5	64	64	64	57	57	M4	17.5	16.5	187.5
CMR-1601	1/8"	89	74	56	81	47	M5	25.5	24.5	213.5