

CGS Series Overview

Description

The CGS series rotary joint is used for high speed, low pressure applications, the media can be both hydraulic and pneumatic, balanced sealing design, double-ball bearing, integrated structure, single-spring design and self-support fixture.

- Transmit air, vacuum, fluid when 360° unrestricted rotation.
- Stainless steel shaft
- Advanced sealing technology
- High reliability and long lifespan



Specifications

Item	
Channel	Single
Pressure	Max.30bar
Thread Size	Rc1/4 ~ Rc1-1/2
Rotor Thread Direction	RH and LH
Operating Temperature	Max.120° C
Suitable Media	Air / Vacuum / Fluid
Speed	≤3000 RPM
Housing Material	Aluminum alloy / stainless steel

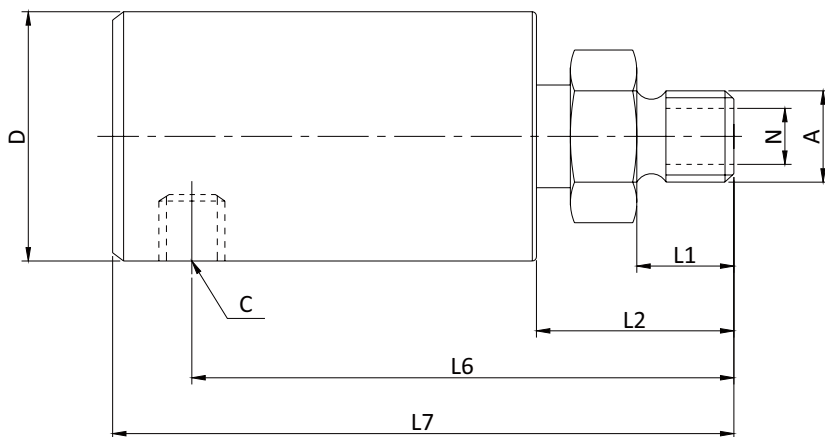
All values listed under Technical Specifications are dependent on a combination of all application parameters. Please note operational life is dependent upon both rotational speed and duty cycle.

INTRODUCE

CGS series

2

CGS Series Dimensions



Part#	A	C	ΦN	ΦD	L1	L2	L6	L7
CGS-8	R1/4	Rc1/4	6	40	12	23	67	74
CGS-10	R3/8	Rc3/8	9	53	15	30	90	105
CGS-15	R1/2	Rc1/2	12	53	15	30	90	105
CGS-20	R3/4	Rc3/4	18	63	17	34	100	120
CGS-25	R1	Rc1	22	67	20	36	107	127
CGS-32	R1-1/4	Rc1-1/4	30	90	22	40	125	150
CGS-40	R1-1/2	Rc1-1/2	38	95	25	45	135	160

Notes:

1. Drawings not actual size, dimensions are in millimeters